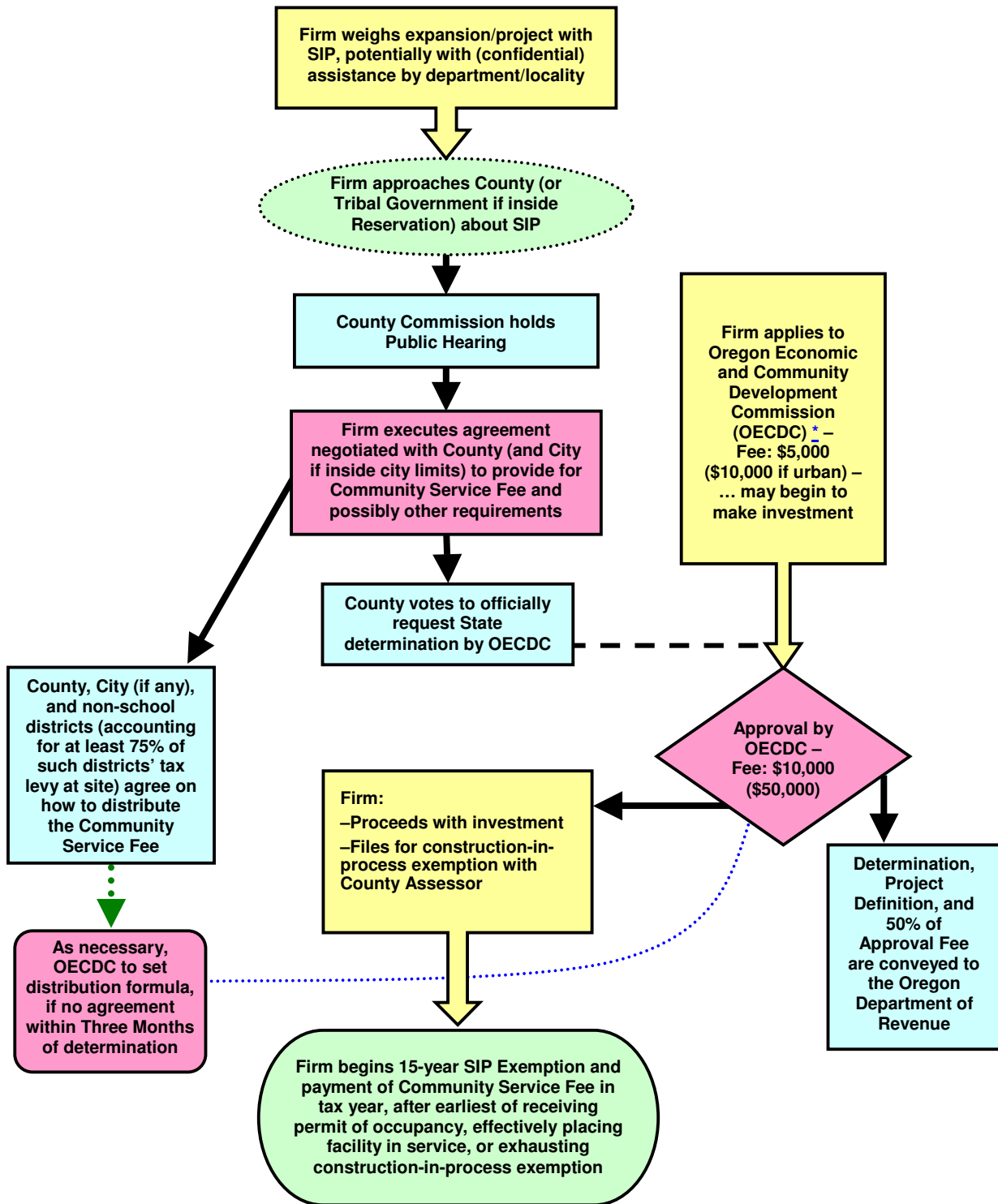


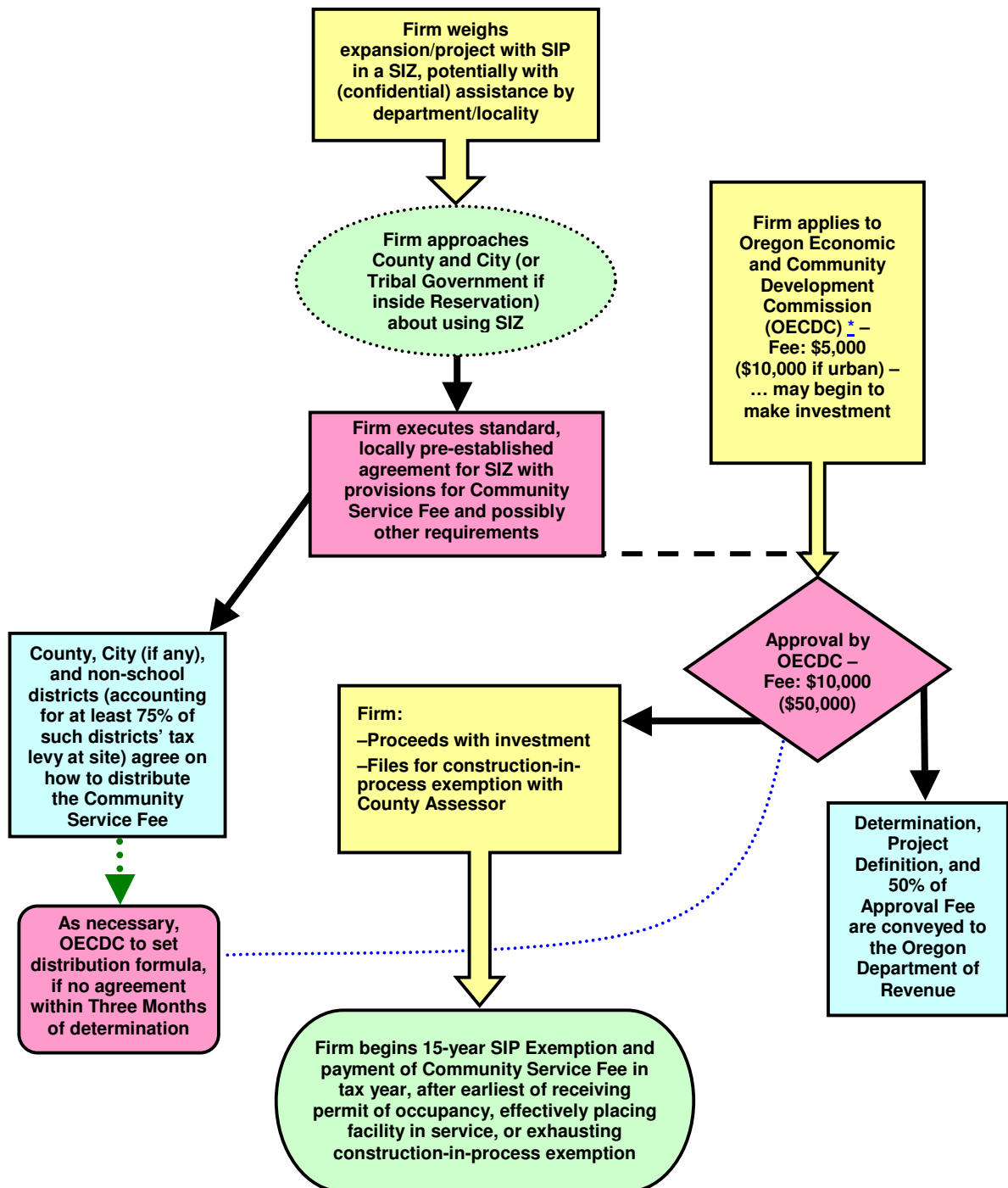
Oregon Strategic Investment Program (SIP): Process

(Ad hoc, outside a Strategic Investment Zone (SIZ), anywhere in Oregon
 –see next page for inside an SIZ)



* Application submitted to state Economic & Community Development Department, which may review for at least 21 days before conveying to Commission; along with application fee, form and up-to-date information, an executed copy of first-source hiring agreement with the 'contact agency' for local publicly funded job training providers will also be needed.

Oregon Strategic Investment Program (SIP): Process Inside a Strategic Investment Zone (SIZ)



* Application submitted to state Economic & Community Development Department, which may review for at least 21 days before conveying to Commission; along with application fee, form and up-to-date information, an executed copy of first-source hiring agreement with the 'contact agency' for local publicly funded job training providers will also be needed.